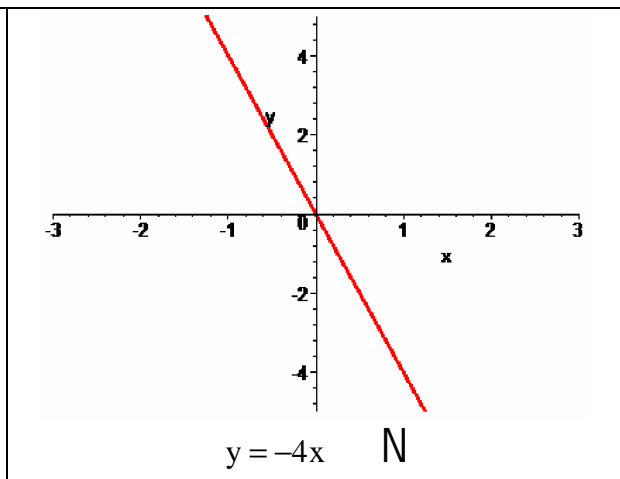
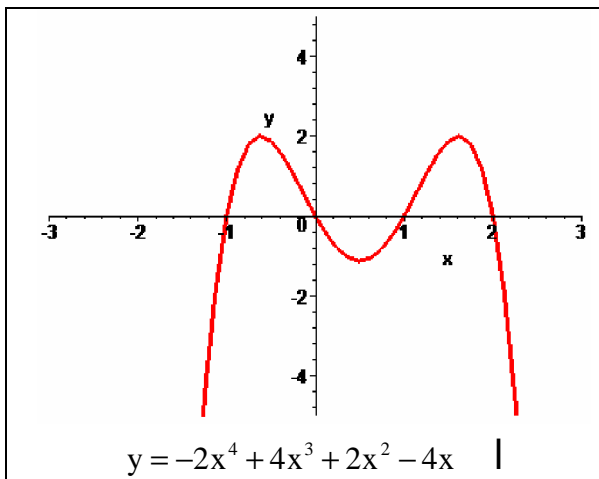
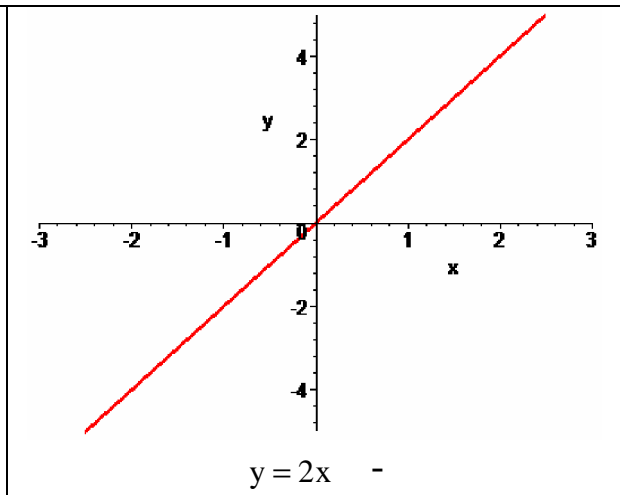
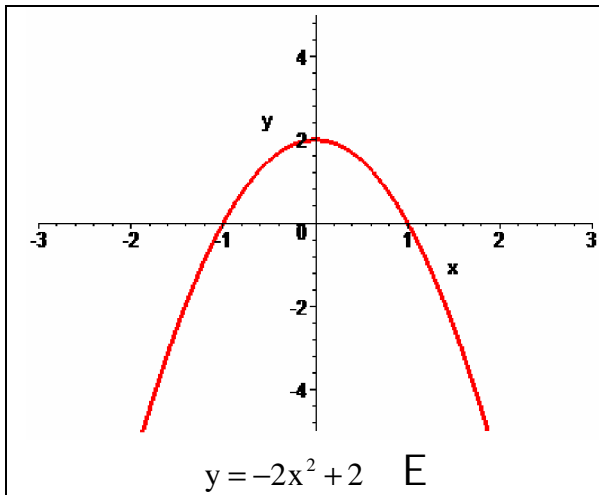
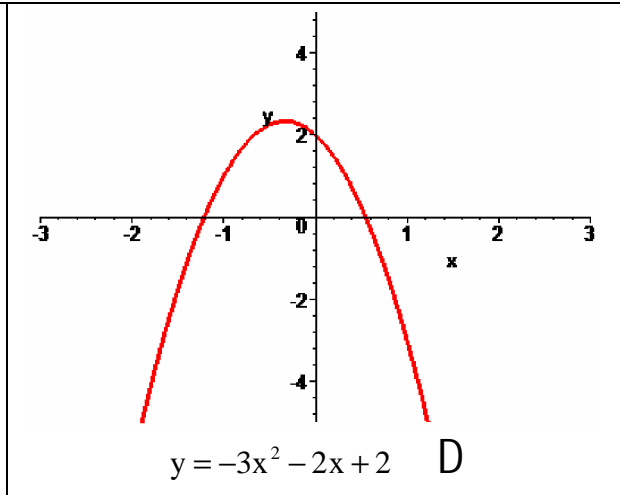
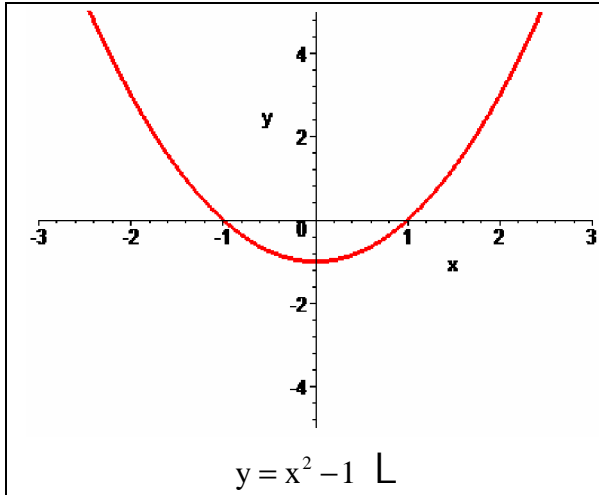
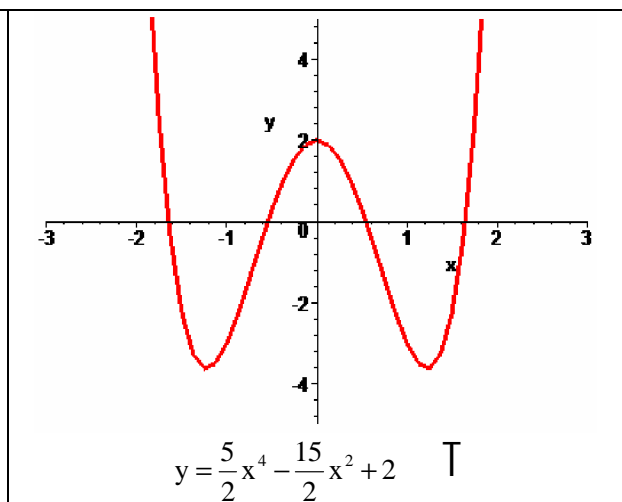
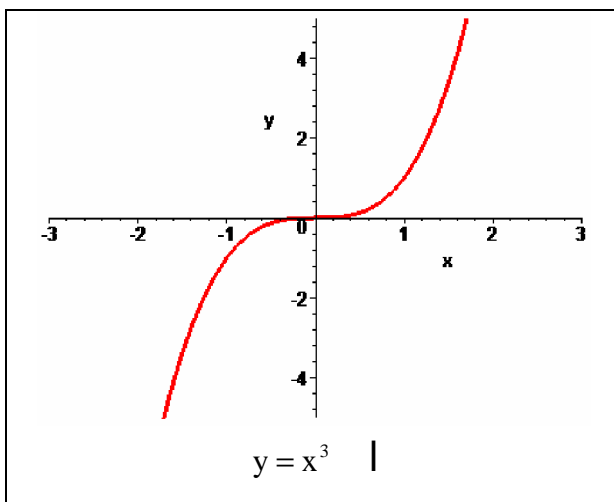
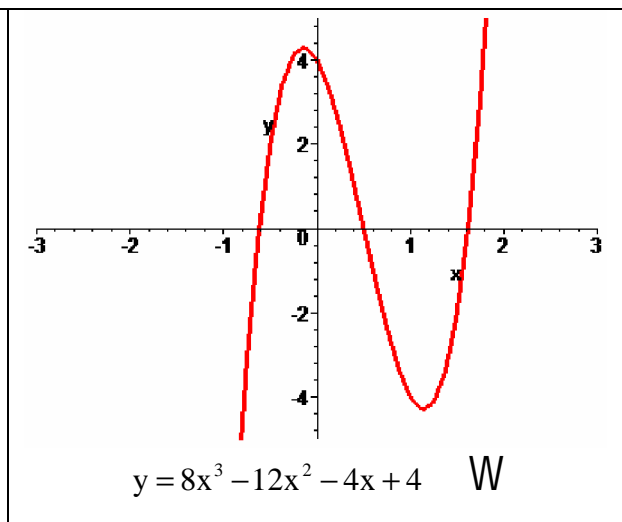
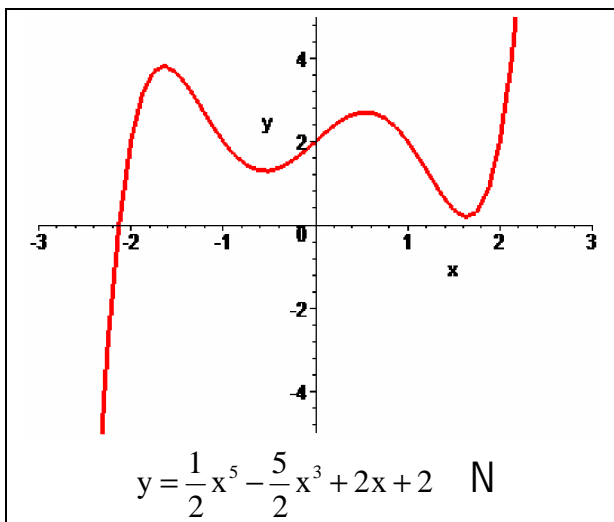
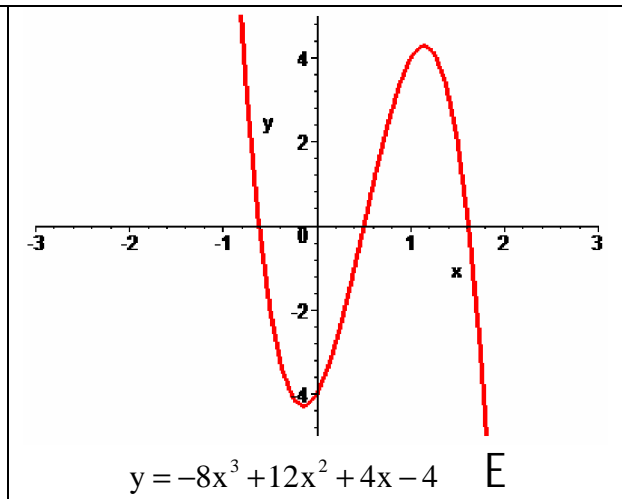
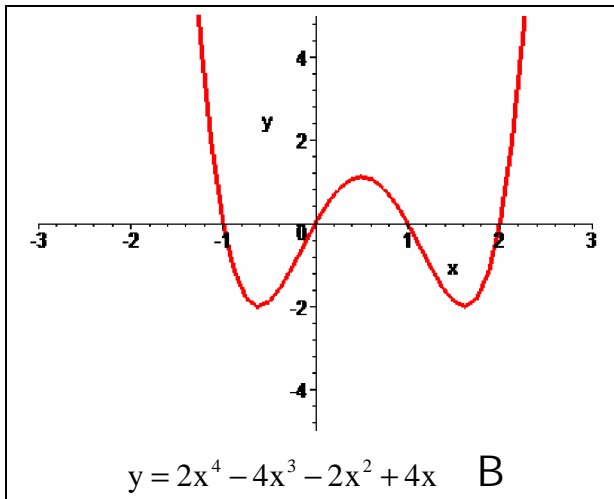
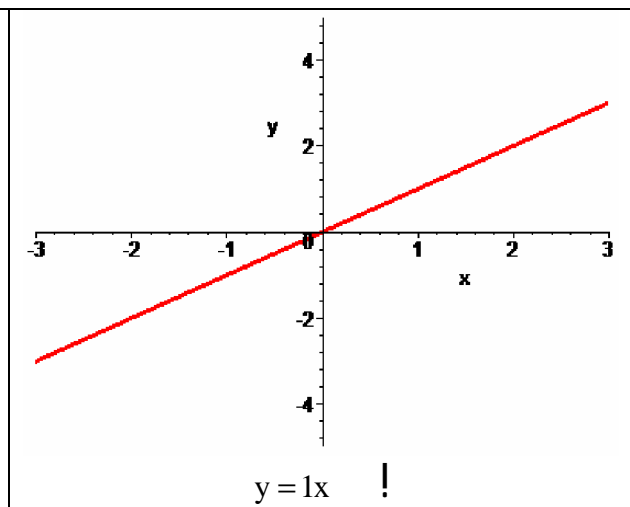
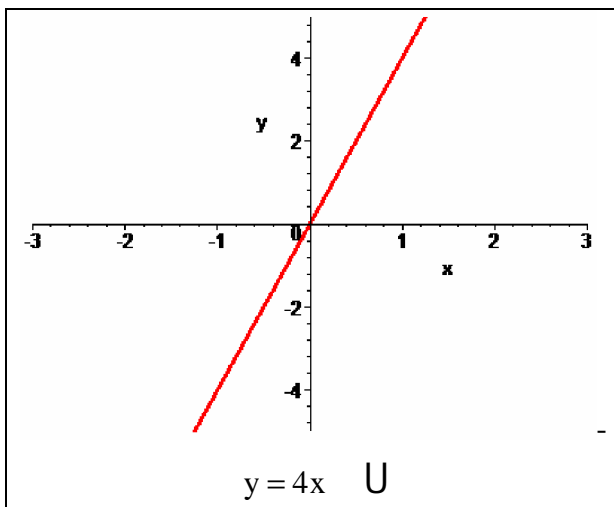
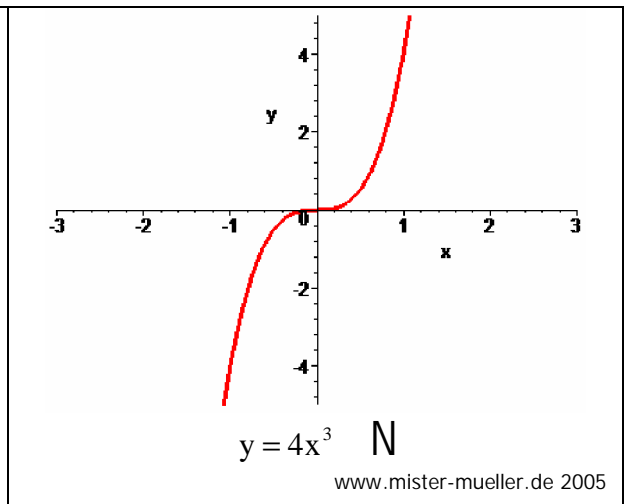
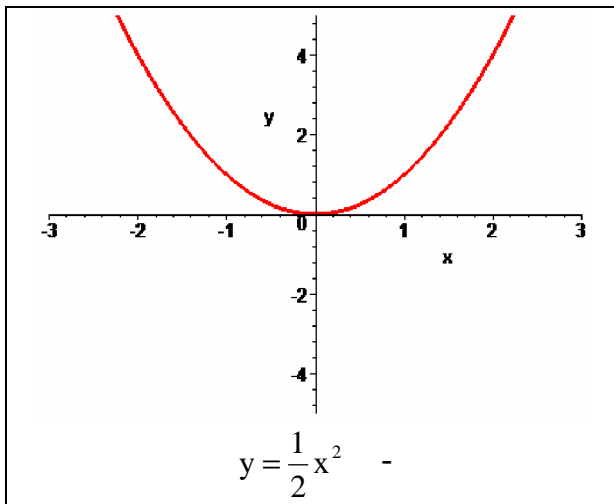
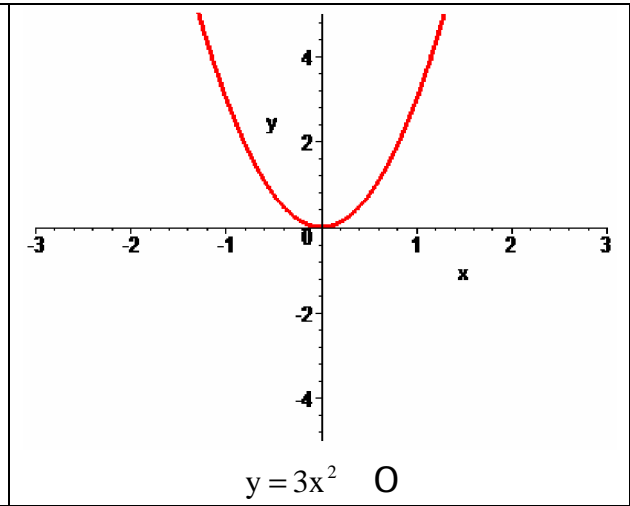
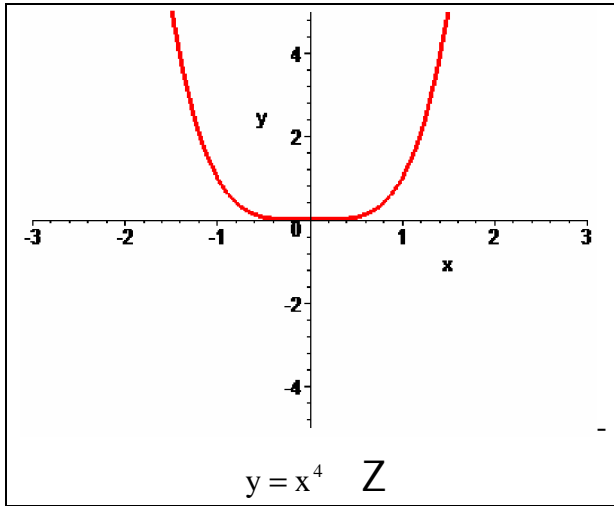
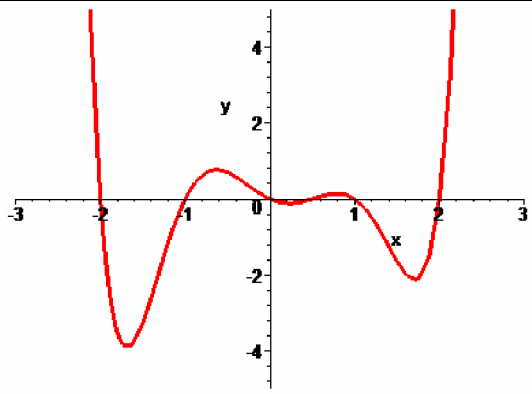


Ableitungs-Domino  
2005 von www.mister-mueller.de

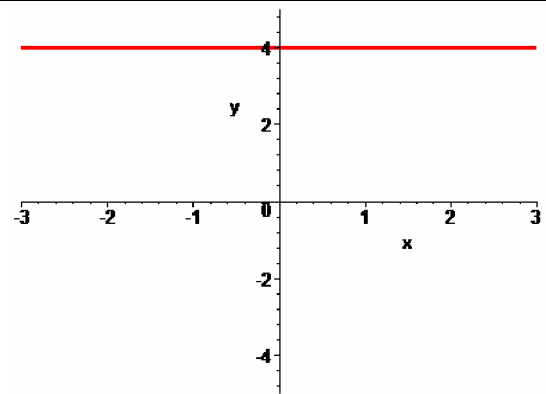








$$y = \frac{1}{2}x^6 - \frac{1}{4}x^5 - \frac{5}{2}x^4 + \frac{5}{4}x^3 + 2x^2 - x \quad \text{N}$$



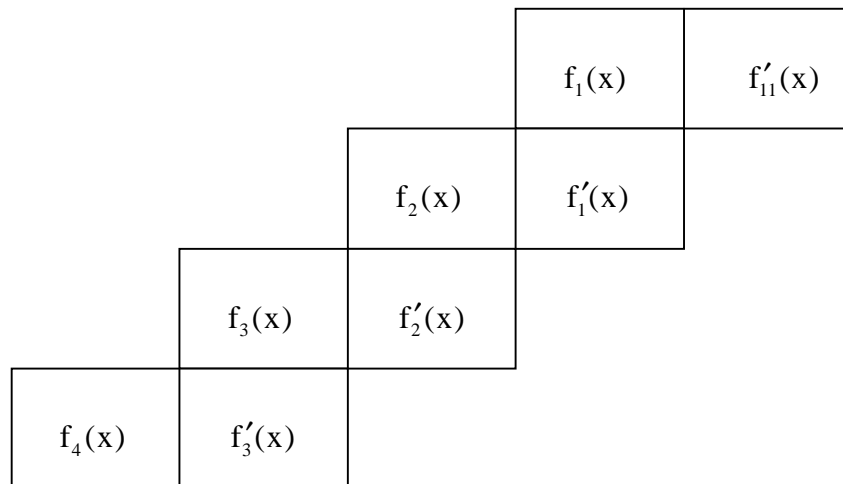
$$y = 4 \quad !$$

## Bastel-Anleitung

Ausdrucken, ausschneiden, evtl. Karten laminieren.

## Spiel-Anleitung

Auf der rechten Seite jeder Dominokarte ist der Graph und die Funktionsgleichung einer Funktion angegeben. Auf der linken Seite ist Graph und Funktionsgleichung einer (ersten) Ableitung dargestellt.



Legt man die Karten so, dass jeweils die Ableitung direkt unter dem Graphen liegt (siehe Abbildung), so kann man aus den Buchstaben einen Lösungsbegriff lesen.